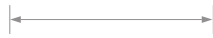


PrimaLine® 3 LED Tape Light



Actual size shown



Field cuttable every 1 in. (12V) / 2 in. (24V)

0.3 in. wide

PrimaLine 3 offers high-output, dimmable task lighting at just 3 watts per foot. This tape light is perfect for medium task lighting, accenting, and workspace lighting, as well as retail, display, cabinet, and shelf applications.

- Medium task, accent, and workspace lighting
- Industry-leading 95+ CRI (Color Rendering Index)
- High R9 and R13 values for superb rendering of warm tones
- 6-year warranty



Stocked CCTs (Kelvin Temp.)*	2200K, 2400K, 2700K, 3000K, 4200K, 5000K*
12V Power Consumption per ft.	2.88 Watts/240mA
24V Power Consumption per ft.	2.88 Watts/120mA
Input Voltages	12/24V DC
Diodes per foot	36
Diode Spacing	0.3 inches
Tape Height	0.1 inches
Beam Angle	120°
12V Field Cuttable (UL 2108)	Every 1 inch
24V Field Cuttable (UL 2108)	Every 2 inches
Max Run Length	16.4 ft. (12V), 20 ft. (24V)

Dimmable	Yes
Diode Type	3528 SMD
Mounting	3M™ Self-Adhesive Tape (non-porous)
Operating Temp.	-13° F to 140° F
Ambient Temp.	-40° F to 186° F
Spool Lengths^	16.4 ft., 50 ft., and 100 ft.
Location	Indoor, Dry
Certifications	UL Listed, UL 2108, CE, RoHS
Standards	Certified to the CA Energy Commission in accordance with the Title 24 JAB 2016 std.
Warranty	6 Year Limited

* In addition to stocked colors, a wide variety of kelvin temperatures is also available by special order. Please call or email to order.

^Each spool comes with 36 in. 20 AWG tinned lead wires at one end and a 36 in. wire with female DC plug at the other.

16.4 ft. spool Item #	50 ft. spool Item #	100 ft. spool Item #	Voltage	Kelvin temp. (CCT) *	CRI	R9 Value	R13 Value	TM30	CQS	Lumens / foot
AL-01-02-1201	AL-01-02-1221	AL-01-02-1241	12V DC	2700K	98.4	92.2	99.6	93.9	94.9	207
AL-01-02-1202	AL-01-02-1222	AL-01-02-1242	12V DC	3000K	98.3	93.8	99.9	93.6	95	234
AL-01-02-1203	AL-01-02-1223	AL-01-02-1243	12V DC	4200K	97.2	95.5	99	90.6	94.4	240
AL-01-02-1204	AL-01-02-1224	AL-01-02-1244	12V DC	5000K	96.8	98.3	99.1	89.7	93	244

16.4 ft. spool Item #	50 ft. spool Item #	100 ft. spool Item #	Voltage	Kelvin temp. (CCT) *	CRI	R9 Value	R13 Value	TM30	CQS	Lumens / foot
AL-01-02-2400	AL-01-02-2420	AL-01-02-2440	24V DC	2200K						170
AL-01-02-2401	AL-01-02-2421	AL-01-02-2441	24V DC	2700K	98.4	92.2	99.6	93.9	94.9	207
AL-01-02-2402	AL-01-02-2422	AL-01-02-2442	24V DC	3000K	98.3	93.8	99.9	93.6	95	234
AL-01-02-2403	AL-01-02-2423	AL-01-02-2443	24V DC	4200K	97.2	95.5	99	90.6	94.4	240
AL-01-02-2404	AL-01-02-2424	AL-01-02-2444	24V DC	5000K	96.8	98.3	99.1	89.7	93	244
AL-01-02-2405	AL-01-02-2425	AL-01-02-2445	24V DC	2400K						178

Accessories (sold separately)

In-Wall-Rated Tape Light Connectors (20 AWG)



Tape-to-Tape Connector

Tape Light Splice Connector

Tape Light DC Plug Connector

Tape-to-Tape Flexible Extension

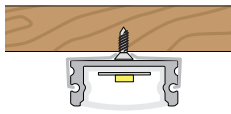
tape connector = W=0.5 / H=0.25 in.

DC plug = Dia. = 0.54 in.

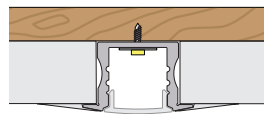
Item #	Description	Length
AL-01-02-9901	Tape-to-Tape Connector	n/a
AL-01-02-9902	Tape Light Splice Connector	6 in.
AL-01-02-9907	Tape Light Splice Connector	36 in.
AL-01-02-9910	Tape Light Splice Connector	8 ft.
AL-01-02-9911	Tape-to-Tape Flexible Extension	3 in.
AL-01-02-9912	Tape-to-Tape Flexible Extension	6 in.

Item #	Description	Length
AL-01-02-9917	Tape-to-Tape Flexible Extension	36 in.
AL-01-02-9922	Tape Light DC Plug Connector	6 in.
AL-01-02-9927	Tape Light DC Plug Connector	36 in.

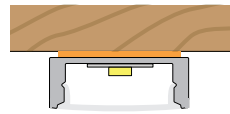
→ Popular Channel Pairings



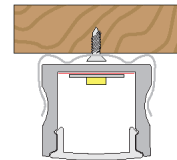
Surfa 1
Surface-Mount



Ankr 4
Mud-In / In-Wall



Surfa 6
Surface-Mount



Surfa 7
Surface-Mount



Click the square to see the Tape Light and Channel Compatibility & Hotspot Guide for a complete list of compatible channels and hotspot ratings.

Wire and Tape Light Management



Wire Harness
Holds wire in place securely.
L = 0.95 / W = 0.3 / H = 0.22 in.
(AL-01-99-9901)



Tape Harness
Provides extra security for tape light, especially at the ends of a run.
L = 0.87 / W = 0.2 / H = 0.125 in.
(AL-01-99-9900)



Amp Champ
Professional Connector - for a more secure connection.

Accepts many combinations of tape and wire. Includes spade connectors for stranded wire, 3M® adhesive backing, and pre-attached 6 inch in-wall-rated 18 AWG lead wire. **See p. 29**

AL-01-02-9900
AL-01-02-9900-5 **(5 pack)**
AL-01-02-9900-10 **(10 pack)**

Compatible Power Supplies (sold separately)

Alloy LED Primavolt® Dimmable Power Supplies w/ETL Listed Junction Box

Smooth dimming using forward-phase ELV, MLV, and TRIAC dimmers.



dry location model



wet location model



Item #	Output	Wattage	Min. Load	Wet Loc.	Class 2
AL-98-03-12024-NM	12V DC	24W	none	N	Y
AL-98-03-12048-NM	12V DC	48W	none	N	Y
AL-98-03-12060-NM	12V DC	60W	none	N	Y
AL-98-03-12080-NM	12V DC	80W	none	Y	N
AL-98-03-12120-NM	12V DC	120W	none	Y	N
AL-98-03-24024-NM	24V DC	24W	none	N	Y
AL-98-03-24048-NM	24V DC	48W	none	N	Y
AL-98-03-24060-NM	24V DC	60W	none	N	Y
AL-98-03-24080-NM	24V DC	80W	none	Y	Y
AL-98-03-24096-NM	24V DC	96W	none	Y	Y
AL-98-03-24150-NM	24V DC	150W	none	Y	N
AL-98-03-24200-NM	24V DC	200W	none	Y	N

Note: Alloy LED strongly recommends using Listed Class 2 power supplies for all installations. Always install in accordance with local and national electrical code regulations.

Lutron® Dimming Accessories

By participating in Lutron's 2017 OEM Advantage program, Alloy LED is able to offer a range of the highest quality low voltage power supplies and selected controls on the market.



Hi-lume Premier
0.1% EcoSystem /
3-wire LED Driver
(96W 24VDC)



Hi-lume 1% LED
Driver 40W
- EcoSystem / 3-wire
control
- 2-wire 120V forward
phase control



Lutron Vive PowPak RF Module
- RF module for EcoSystem LED
driver control
- Use with the Lutron EcoSystem
drivers shown to "Vive-enable"
Alloy LED products

Lutron® Hi-lume LED Drivers

Item #	Output	Wattage	Min. Load	Class 2
AL-98-07-12040	12V DC	40W	n/a	Y
AL-98-07-12040-3WIRE	12V DC	40W	n/a	Y
AL-98-07-24040	24V DC	40W	n/a	Y
AL-98-07-24040-3WIRE	24V DC	40W	n/a	Y
AL-98-07-24096-3WIRE	24V DC	96W	n/a	Y

Lutron® Controls

Item #	Desc.	Voltage
AL-98-07-9901	EcoSystem Control Module	n/a
AL-98-07-9901-8	EcoSystem Control Module - 8 pack	n/a
AL-98-07-9950	CL Dimmer	120V AC
AL-98-07-9950-FPLATE	CL Dimmer faceplate	n/a

Dimmers & Switches

SlimDim Wireless Dimmers

Using long-range RF technology, these LED dimmers avoid the need for connecting directly to a power supply, offering freedom to mount anywhere. Can also be used as a fob for mobile, hand-held control.



Remote Control Dimmer Switch

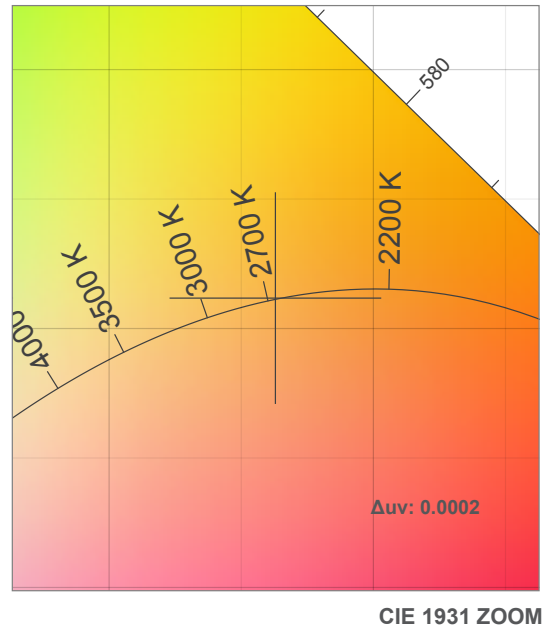
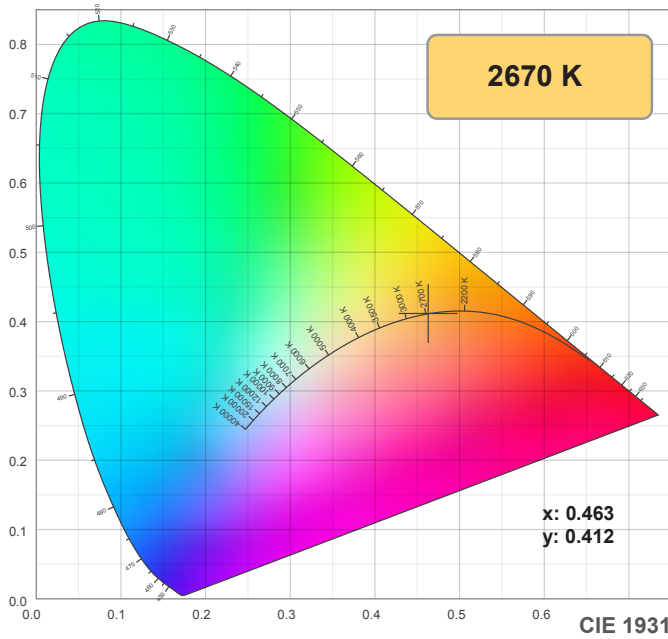
Provides full dimming and on/off control, and includes a touch wheel that allows for direct visual selection of brightness. It can also operate up to four independent zones



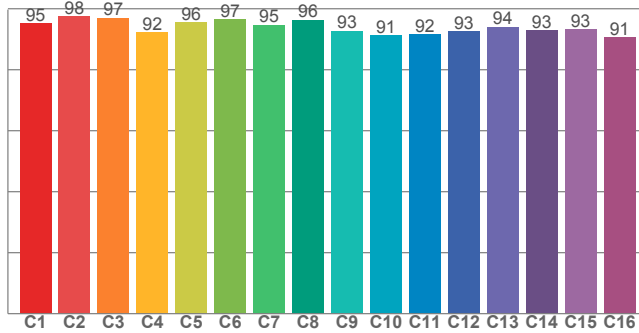
AL-70-01-0001	SlimDim Wireless Dimmer
AL-70-01-0002	Single Color Receiver (96W max.) [sold separately]

AL-60-03-0001	Remote Control Dimmer Switch
AL-70-01-0002	Single Channel Receiver (sold separately)
AL-60-03-0004-V2	Wireless Receiver (sold separately)

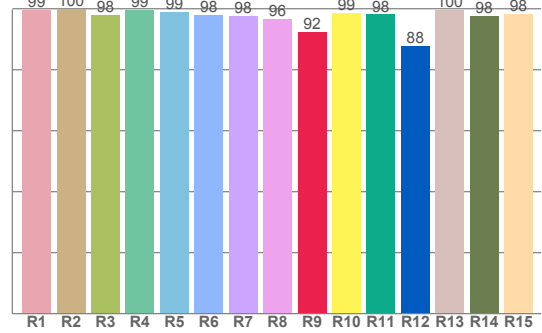
2700K



TM30: 93.9



CRI: 98.4 (R1-R8)



CRI R values, only R1-R8 are used to calculate final CRI value

R1	R2	R3	R4	R5	R6	R7	R8	R9	R10	R11	R12	R13	R14	R15
99.4	99.9	97.8	99.4	98.9	98.0	97.7	96.5	92.2	98.6	98.1	87.8	99.6	97.7	98.2

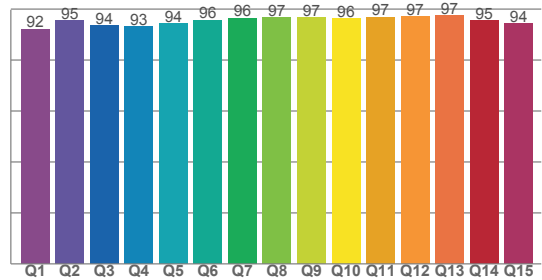
TM30 C values, 16 binned values out of total of 99 C values

C1	C2	C3	C4	C5	C6	C7	C8	C9	C10	C11	C12	C13	C14	C15	C16
95.2	97.5	97.0	92.3	95.6	96.6	94.8	96.4	92.7	91.2	91.7	92.5	94.1	92.8	93.2	90.6

CQS Q values

Q1	Q2	Q3	Q4	Q5	Q6	Q7	Q8	Q9	Q10	Q11	Q12	Q13	Q14	Q15
92.2	95.5	93.6	93.1	94.2	95.8	96.5	96.8	96.6	96.4	96.9	97.0	97.4	95.4	94.3

CQS: 94.9



Color parameters

Color temperature	Color rendering index	Red component	Color fidelity	Color gamut	Color quality scale	Color coordinate cie 1931	Color coordinate cie 1931	Color coordinate	Color coordinate	Color deviation from black body
CCT	CRI	CRI R9	TM30 Rf	TM30 Rg	CQS	x	y	u	v	Δuv
2670 K	98.4	92.2	93.9	99.5	94.9	0.463	0.412	0.264	0.352	0.0002

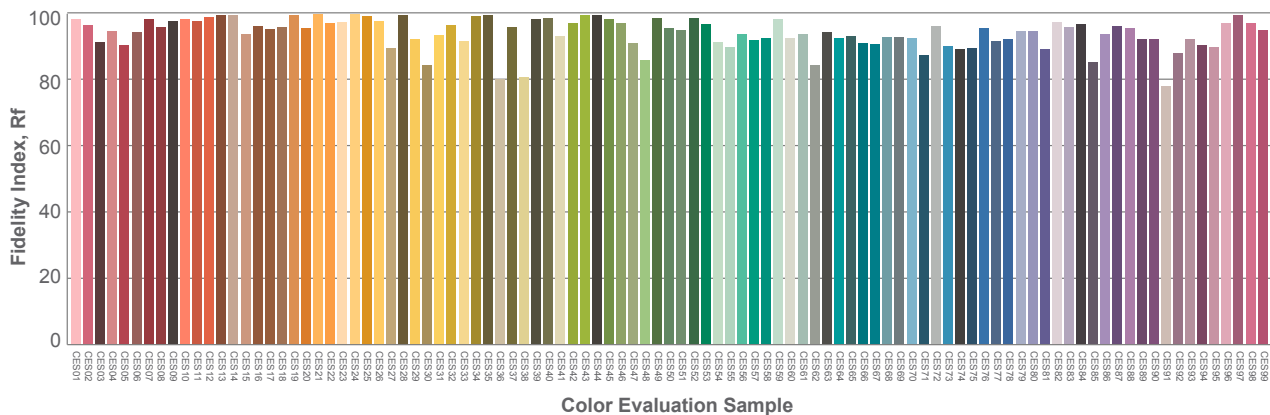
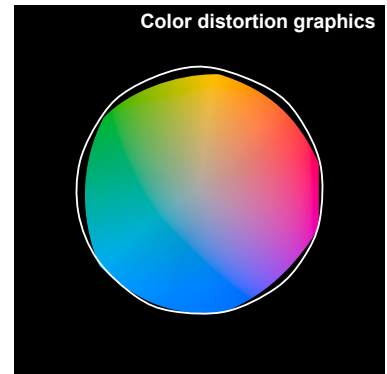
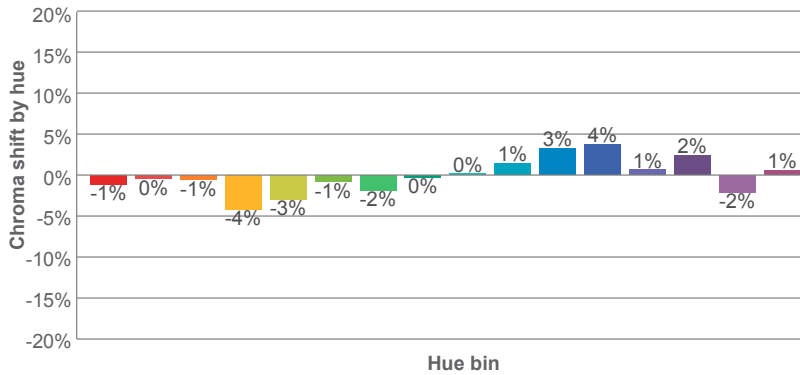
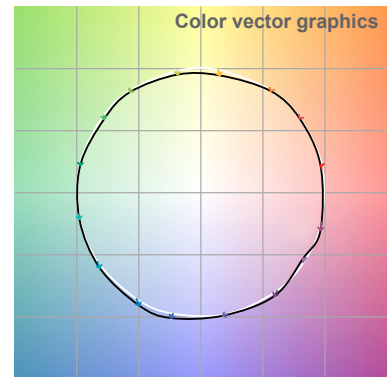
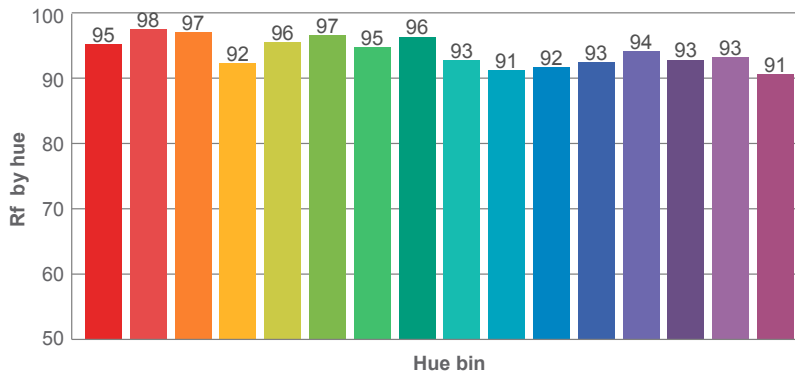
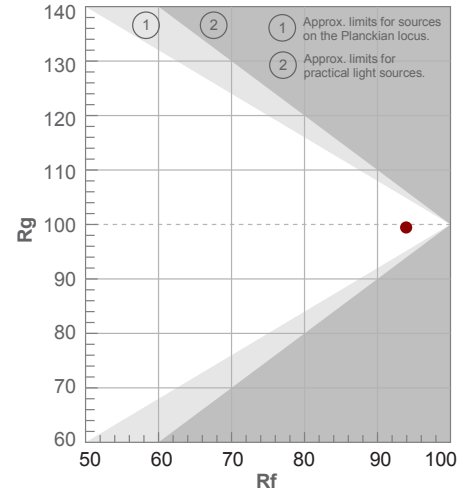
Note: specifications are representative of the diode type and not a particular tape light article.

2700K

Rf 93.9
Fidelity index Rf

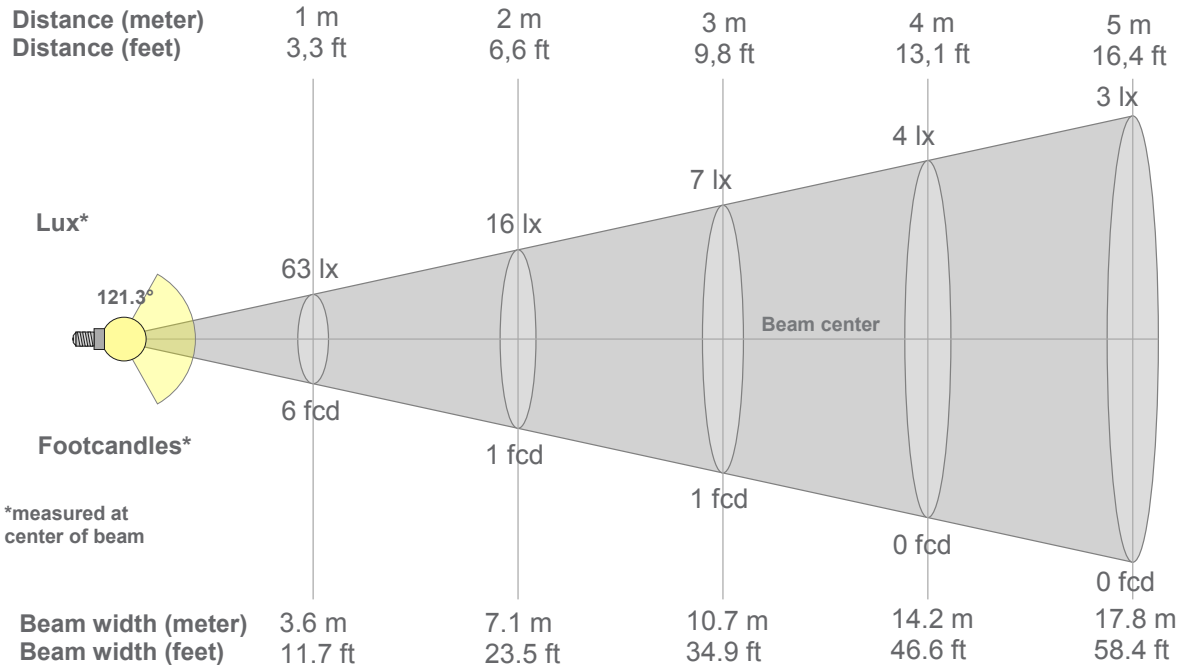
Rg 99.5
Gammut index Rg

Hue Bin	R _f	Graphic shifts (%)	
		Chroma	Hue
1	95	-1%	1%
2	98	0%	0%
3	97	-1%	0%
4	92	-4%	-2%
5	96	-3%	1%
6	97	-1%	2%
7	95	-2%	2%
8	96	0%	2%
9	93	0%	4%
10	91	1%	5%
11	92	3%	5%
12	93	4%	-1%
13	94	1%	-4%
14	93	2%	-4%
15	93	-2%	0%
16	91	1%	-6%



Note: specifications are representative of the diode type and not a particular tape light article.

2700K



Beam intensities from 1-20m

1m	2m	3m	4m	5m	6m	7m	8m	9m	10m	11m	12m	13m	14m	15m	16m	17m	18m	19m	20m
3.3ft	6.6ft	9.8ft	13.1ft	16.4ft	19.7ft	23ft	26.2ft	29.5ft	32.8ft	36.1ft	39.4ft	42.7ft	45.9ft	49.2ft	52.5ft	55.8ft	59.1ft	62.3ft	65.6ft
63lx	16lx	7lx	4lx	3lx	2lx	1lx	1lx	1lx	1lx	1lx	0lx	0lx	0lx	0lx	0lx	0lx	0lx	0lx	0lx
5.9fcd	1.5fcd	0.7fcd	0.4fcd	0.2fcd	0.2fcd	0.1fcd	0.1fcd	0.1fcd	0.1fcd	0fcd	0fcd	0fcd	0fcd	0fcd	0fcd	0fcd	0fcd	0fcd	0fcd

Intensities in 0° c-plane

0°	5°	10°	15°	20°	25°	30°	35°	40°	45°	50°	55°	60°	65°	70°	75°	80°	85°	90°	95°
63.1	62.9	62.4	61.4	60.0	58.1	55.8	53.0	49.6	45.8	41.7	37.1	32.2	27.2	22.0	16.4	10.9	5.9	2.3	0.8
100%	100%	99%	97%	95%	92%	88%	84%	79%	73%	66%	59%	51%	43%	35%	26%	17%	9%	4%	1%

Intensities in 90° c-plane

0°	5°	10°	15°	20°	25°	30°	35°	40°	45°	50°	55°	60°	65°	70°	75°	80°	85°	90°	95°
63.1	62.9	62.4	61.4	60.0	58.1	55.8	53.0	49.6	45.8	41.7	37.1	32.2	27.2	22.0	16.4	10.9	5.9	2.3	0.8
100%	100%	99%	97%	95%	92%	88%	84%	79%	73%	66%	59%	51%	43%	35%	26%	17%	9%	4%	1%

Intensities in 180° c-plane

0°	5°	10°	15°	20°	25°	30°	35°	40°	45°	50°	55°	60°	65°	70°	75°	80°	85°	90°	95°
63.1	62.9	62.1	61.0	59.3	57.2	54.8	51.9	48.7	45.1	41.2	36.9	32.2	27.2	22.0	16.6	11.3	6.3	2.3	0.5
100%	100%	98%	97%	94%	91%	87%	82%	77%	72%	65%	58%	51%	43%	35%	26%	18%	10%	4%	1%

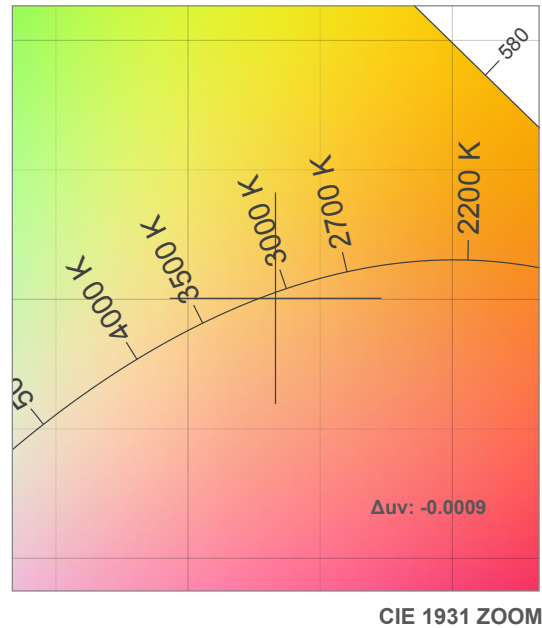
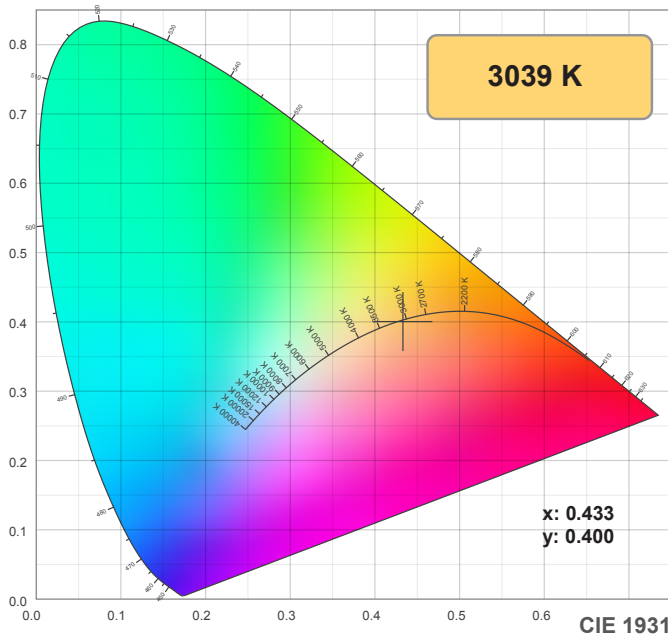
Intensities in 270° c-plane

0°	5°	10°	15°	20°	25°	30°	35°	40°	45°	50°	55°	60°	65°	70°	75°	80°	85°	90°	95°
63.1	62.9	62.1	61.0	59.3	57.2	54.8	51.9	48.7	45.1	41.2	36.9	32.2	27.2	22.0	16.6	11.3	6.3	2.3	0.5
100%	100%	98%	97%	94%	91%	87%	82%	77%	72%	65%	58%	51%	43%	35%	26%	18%	10%	4%	1%

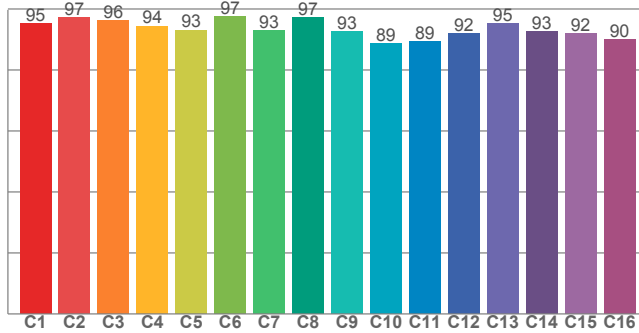
Beam angle 50%	Field angle 10%	Cutoff angle 2,5%	Intensity ratio in 120° cone	Intensity ratio in 90° cone
121.3°	169.6°	182.3°	72.7%	48.4%

Note: specifications are representative of the diode type and not a particular tape light article.

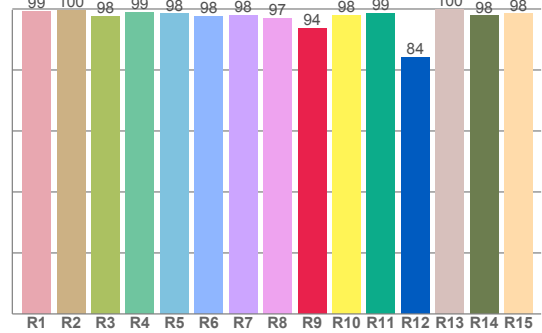
3000K



TM30: 93.6



CRI: 98.3 (R1-R8)



CRI R values, only R1-R8 are used to calculate final CRI value

R1	R2	R3	R4	R5	R6	R7	R8	R9	R10	R11	R12	R13	R14	R15
99.3	99.7	97.6	98.9	98.4	97.6	97.9	97.0	93.8	97.9	98.7	84.1	99.9	97.8	98.4

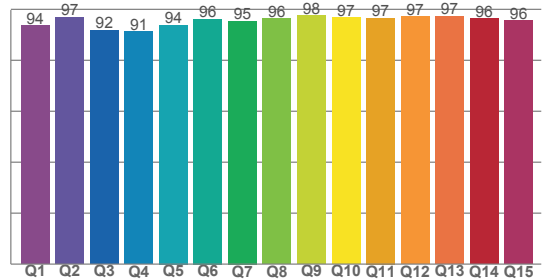
TM30 C values, 16 binned values out of total of 99 C values

C1	C2	C3	C4	C5	C6	C7	C8	C9	C10	C11	C12	C13	C14	C15	C16
95.3	97.2	96.2	94.4	93.1	97.4	92.9	97.3	92.5	88.8	89.3	92.1	95.2	92.6	92.1	89.9

CQS Q values

Q1	Q2	Q3	Q4	Q5	Q6	Q7	Q8	Q9	Q10	Q11	Q12	Q13	Q14	Q15
93.8	96.9	91.8	91.3	93.8	96.2	95.4	96.3	97.5	96.8	96.6	97.1	97.3	96.3	95.6

CQS: 95.0



Color parameters

Color temperature	Color rendering index	Red component	Color fidelity	Color gamut	Color quality scale	Color coordinate cie 1931	Color coordinate cie 1931	Color coordinate	Color coordinate	Color deviation from black body
CCT	CRI	CRI R9	TM30 Rf	TM30 Rg	CQS	x	y	u	v	Δuv
3039 K	98.3	93.8	93.6	100.1	95.0	0.433	0.400	0.250	0.346	-0.0009

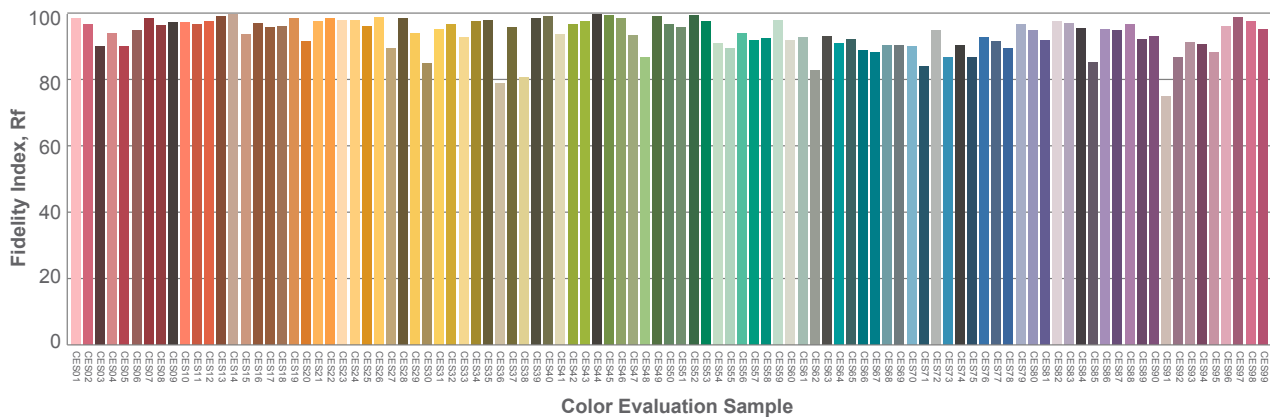
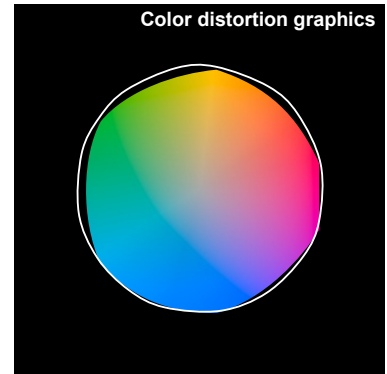
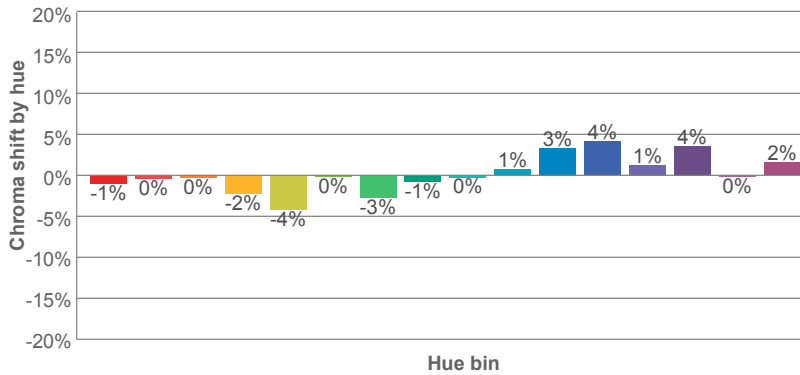
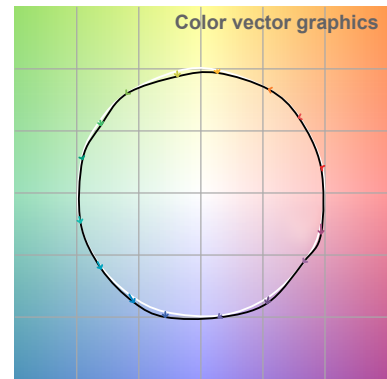
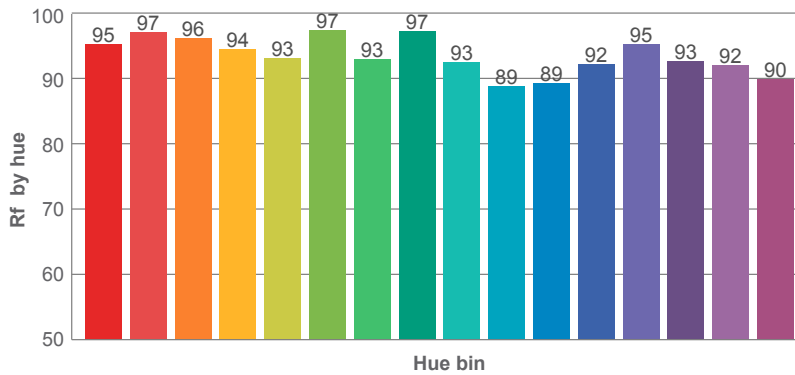
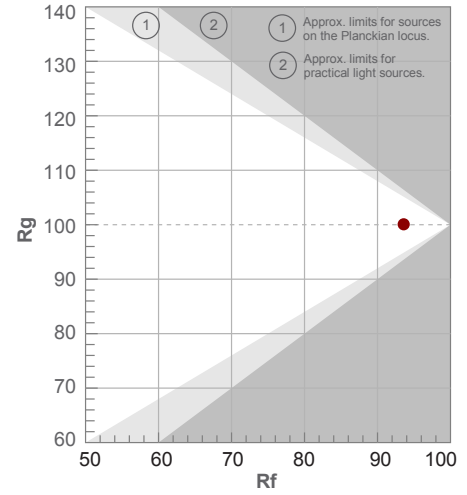
Note: specifications are representative of the diode type and not a particular tape light article.

3000K

Rf 93.6
Fidelity index Rf

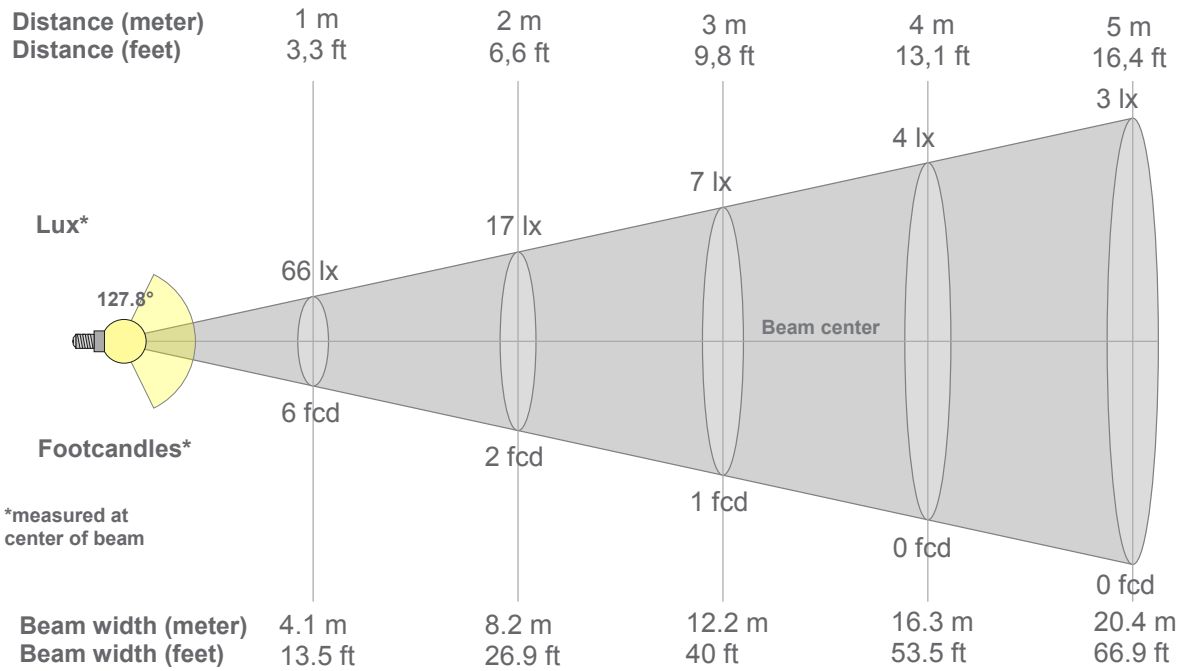
Rg 100.1
Gammut index Rg

Hue Bin	R _f	Graphic shifts (%)	
		Chroma	Hue
1	95	-1%	1%
2	97	0%	0%
3	96	0%	1%
4	94	-2%	-1%
5	93	-4%	0%
6	97	0%	1%
7	93	-3%	3%
8	97	-1%	1%
9	93	0%	5%
10	89	1%	6%
11	89	3%	7%
12	92	4%	1%
13	95	1%	-3%
14	93	4%	-4%
15	92	0%	-2%
16	90	2%	-7%



Note: specifications are representative of the diode type and not a particular tape light article.

3000K



Beam intensities from 1-20m

1m	2m	3m	4m	5m	6m	7m	8m	9m	10m	11m	12m	13m	14m	15m	16m	17m	18m	19m	20m
3.3ft	6.6ft	9.8ft	13.1ft	16.4ft	19.7ft	23ft	26.2ft	29.5ft	32.8ft	36.1ft	39.4ft	42.7ft	45.9ft	49.2ft	52.5ft	55.8ft	59.1ft	62.3ft	65.6ft
66lx	17lx	7lx	4lx	3lx	2lx	1lx	1lx	1lx	1lx	1lx	0lx	0lx	0lx	0lx	0lx	0lx	0lx	0lx	0lx
6.2fcd	1.5fcd	0.7fcd	0.4fcd	0.2fcd	0.2fcd	0.1fcd	0.1fcd	0.1fcd	0.1fcd	0.1fcd	0fcd	0fcd	0fcd	0fcd	0fcd	0fcd	0fcd	0fcd	0fcd

Intensities in 0° c-plane

0°	5°	10°	15°	20°	25°	30°	35°	40°	45°	50°	55°	60°	65°	70°	75°	80°	85°	90°	95°
66.2	65.9	65.0	63.8	62.1	60.0	57.5	54.8	51.6	48.7	45.9	42.6	37.8	31.8	25.7	19.8	14.0	8.1	3.2	1.1
100%	99%	98%	96%	94%	91%	87%	83%	78%	73%	69%	64%	57%	48%	39%	30%	21%	12%	5%	2%

Intensities in 90° c-plane

0°	5°	10°	15°	20°	25°	30°	35°	40°	45°	50°	55°	60°	65°	70°	75°	80°	85°	90°	95°
66.2	65.9	65.0	63.8	62.1	60.0	57.5	54.8	51.6	48.7	45.9	42.6	37.8	31.8	25.7	19.8	14.0	8.1	3.2	1.1
100%	99%	98%	96%	94%	91%	87%	83%	78%	73%	69%	64%	57%	48%	39%	30%	21%	12%	5%	2%

Intensities in 180° c-plane

0°	5°	10°	15°	20°	25°	30°	35°	40°	45°	50°	55°	60°	65°	70°	75°	80°	85°	90°	95°
66.2	66.1	65.7	64.6	63.2	61.2	58.8	56.0	53.0	49.7	45.7	41.5	36.8	32.1	27.2	21.9	16.4	11.1	6.3	2.6
100%	100%	99%	98%	95%	92%	89%	85%	80%	75%	69%	63%	56%	48%	41%	33%	25%	17%	10%	4%

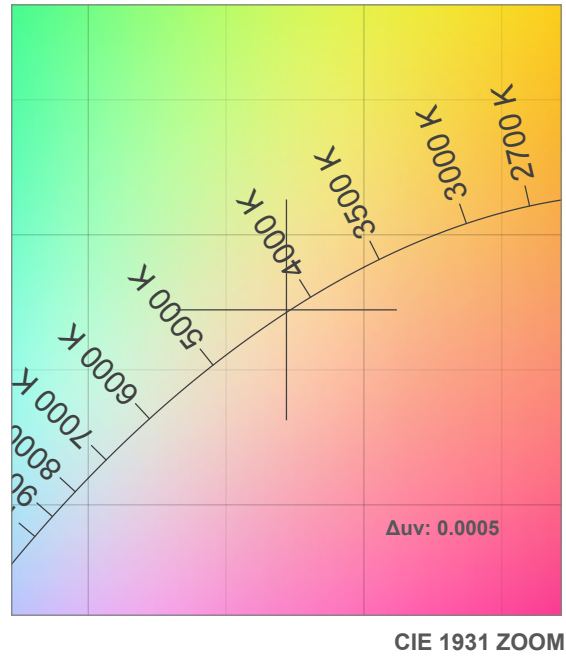
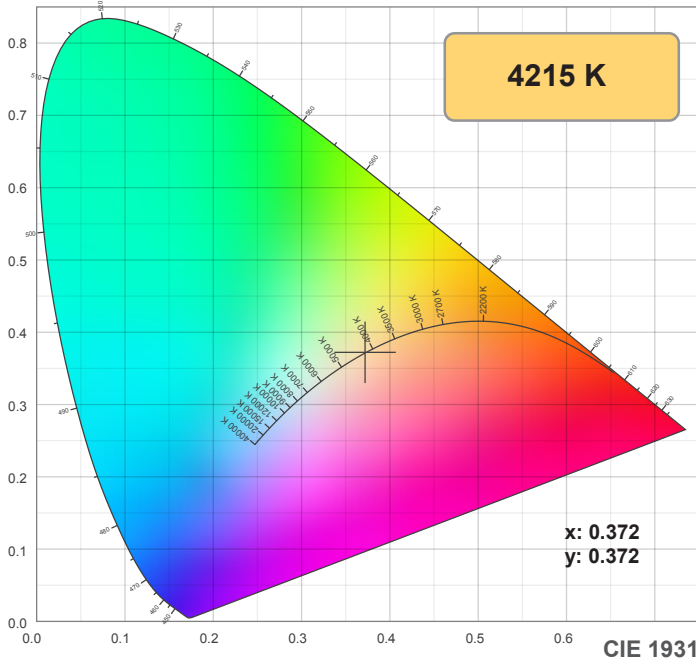
Intensities in 270° c-plane

0°	5°	10°	15°	20°	25°	30°	35°	40°	45°	50°	55°	60°	65°	70°	75°	80°	85°	90°	95°
66.2	66.1	65.7	64.6	63.2	61.2	58.8	56.0	53.0	49.7	45.7	41.5	36.8	32.1	27.2	21.9	16.4	11.1	6.3	2.6
100%	100%	99%	98%	95%	92%	89%	85%	80%	75%	69%	63%	56%	48%	41%	33%	25%	17%	10%	4%

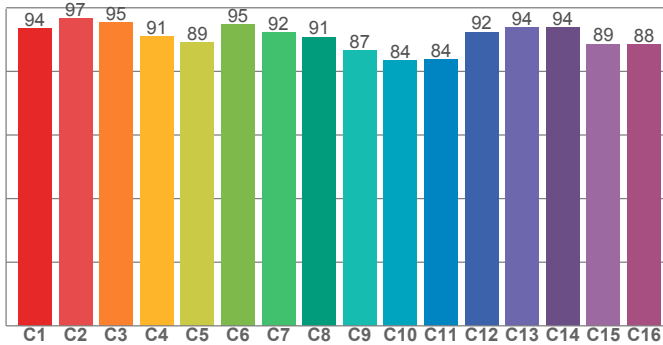
Beam angle 50%	Field angle 10%	Cutoff angle 2,5%	Intensity ratio in 120° cone	Intensity ratio in 90° cone
127.8°	175.9°	189.3°	69.3%	45.2%

Note: specifications are representative of the diode type and not a particular tape light article.

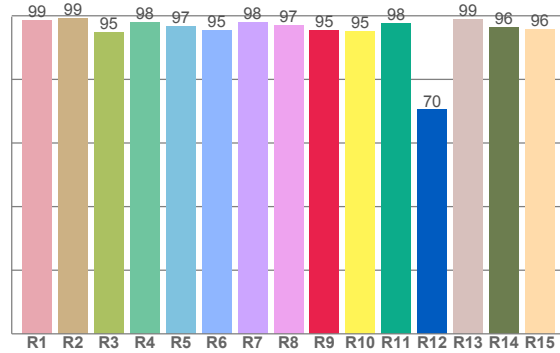
4200K



TM30: 90.6



CRI: 97.2 (R1-R8)



CRI R values, only R1-R8 are used to calculate final CRI value

R1	R2	R3	R4	R5	R6	R7	R8	R9	R10	R11	R12	R13	R14	R15
98.6	99.1	94.9	98.0	96.6	95.3	98.0	96.9	95.5	95.2	97.7	70.4	99.0	96.5	95.6

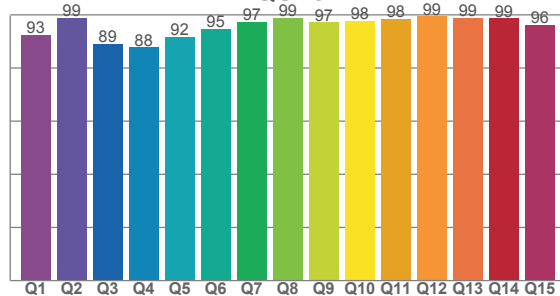
TM30 C values, 16 binned values out of total of 99 C values

C1	C2	C3	C4	C5	C6	C7	C8	C9	C10	C11	C12	C13	C14	C15	C16
93.5	96.6	95.5	91.0	89.2	94.8	92.2	90.9	86.6	83.5	83.7	92.4	93.9	93.9	88.6	88.4

CQS Q values

Q1	Q2	Q3	Q4	Q5	Q6	Q7	Q8	Q9	Q10	Q11	Q12	Q13	Q14	Q15
92.6	98.9	89.1	87.8	91.8	94.7	97.3	98.8	97.1	97.8	98.4	99.4	98.7	98.7	96.2

CQS: 94.4



Color parameters

Color temperature	Color rendering index	Red component	Color fidelity	Color gamut	Color quality scale	Color coordinate cie 1931	Color coordinate cie 1931	Color coordinate	Color coordinate	Color division from black body
CCT	CRI	CRI R9	TM30 Rf	TM30 Rg	CQS	x	y	u	v	Δuv
4215 K	97.2	95.5	90.6	99.4	94.4	0.372	0.372	0.221	0.332	0.0005

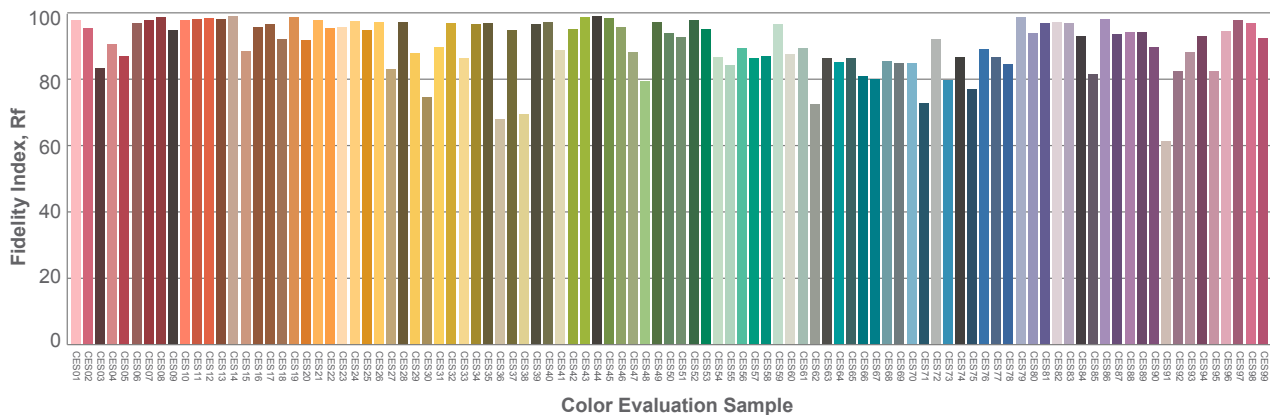
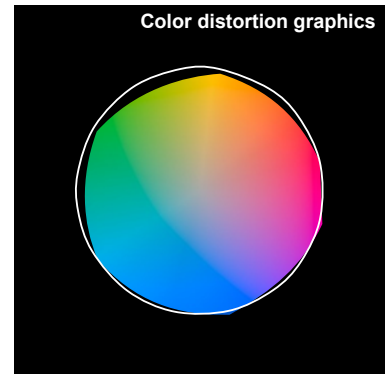
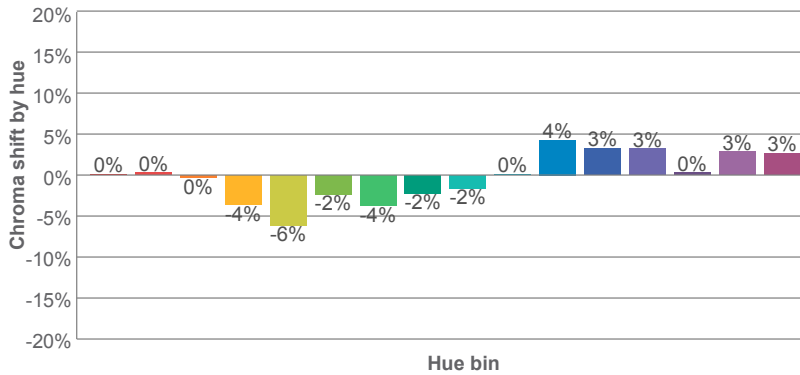
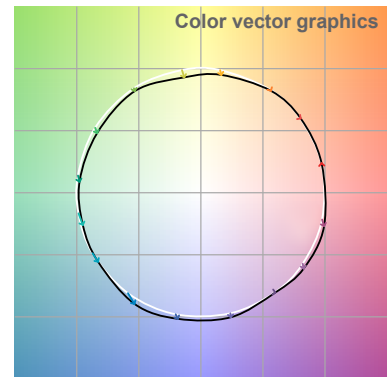
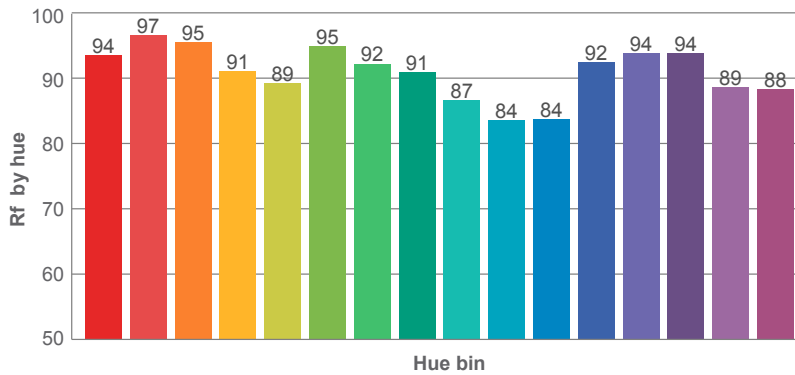
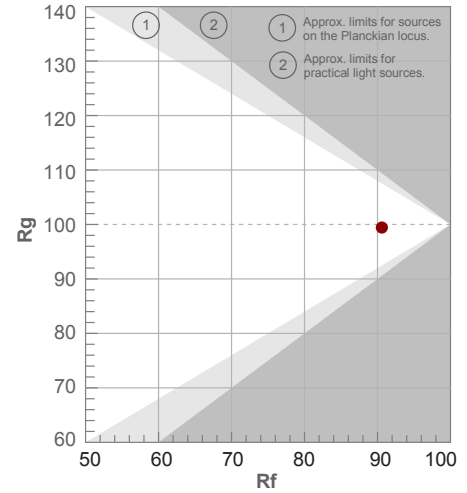
Note: specifications are representative of the diode type and not a particular tape light article.

4200K

Rf 90.6
Fidelity index Rf

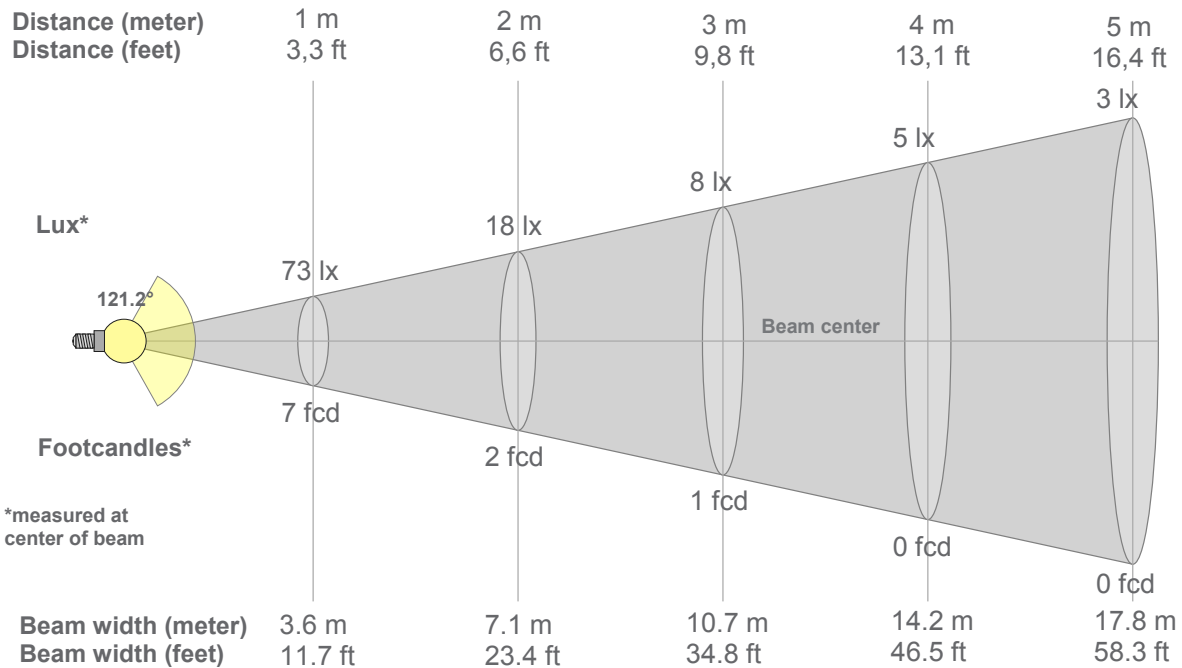
Rg 99.4
Gammut index Rg

Hue Bin	R _f	Graphic shifts (%)	
		Chroma	Hue
1	94	0%	1%
2	97	0%	-1%
3	95	0%	-1%
4	91	-4%	-2%
5	89	-6%	-1%
6	95	-2%	1%
7	92	-4%	3%
8	91	-2%	5%
9	87	-2%	10%
10	84	0%	8%
11	84	4%	9%
12	92	3%	2%
13	94	3%	0%
14	94	0%	0%
15	89	3%	-3%
16	88	3%	-5%



Note: specifications are representative of the diode type and not a particular tape light article.

4200K



Beam intensities from 1-20m

1m	2m	3m	4m	5m	6m	7m	8m	9m	10m	11m	12m	13m	14m	15m	16m	17m	18m	19m	20m
3.3ft	6.6ft	9.8ft	13.1ft	16.4ft	19.7ft	23ft	26.2ft	29.5ft	32.8ft	36.1ft	39.4ft	42.7ft	45.9ft	49.2ft	52.5ft	55.8ft	59.1ft	62.3ft	65.6ft
73lx	18lx	8lx	5lx	3lx	2lx	1lx	1lx	1lx	1lx	1lx	1lx	0lx	0lx	0lx	0lx	0lx	0lx	0lx	0lx
6.8fcd	1.7fcd	0.8fcd	0.4fcd	0.3fcd	0.2fcd	0.1fcd	0.1fcd	0.1fcd	0.1fcd	0.1fcd	0fcd	0fcd	0fcd	0fcd	0fcd	0fcd	0fcd	0fcd	0fcd

Intensities in 0° c-plane

0°	5°	10°	15°	20°	25°	30°	35°	40°	45°	50°	55°	60°	65°	70°	75°	80°	85°	90°	95°
73.1	72.5	71.8	70.7	69.0	66.7	63.8	60.3	57.2	54.1	49.1	43.4	37.3	31.0	24.7	18.3	12.1	6.6	2.2	0.9
100%	99%	98%	97%	94%	91%	87%	83%	78%	74%	67%	59%	51%	42%	34%	25%	17%	9%	3%	1%

Intensities in 90° c-plane

0°	5°	10°	15°	20°	25°	30°	35°	40°	45°	50°	55°	60°	65°	70°	75°	80°	85°	90°	95°
73.1	72.5	71.8	70.7	69.0	66.7	63.8	60.3	57.2	54.1	49.1	43.4	37.3	31.0	24.7	18.3	12.1	6.6	2.2	0.9
100%	99%	98%	97%	94%	91%	87%	83%	78%	74%	67%	59%	51%	42%	34%	25%	17%	9%	3%	1%

Intensities in 180° c-plane

0°	5°	10°	15°	20°	25°	30°	35°	40°	45°	50°	55°	60°	65°	70°	75°	80°	85°	90°	95°
73.1	72.7	71.8	70.4	68.6	66.2	63.2	59.8	56.0	51.8	47.3	42.5	37.2	31.7	25.9	19.9	14.0	8.4	3.9	1.0
100%	100%	98%	96%	94%	91%	87%	82%	77%	71%	65%	58%	51%	43%	35%	27%	19%	12%	5%	1%

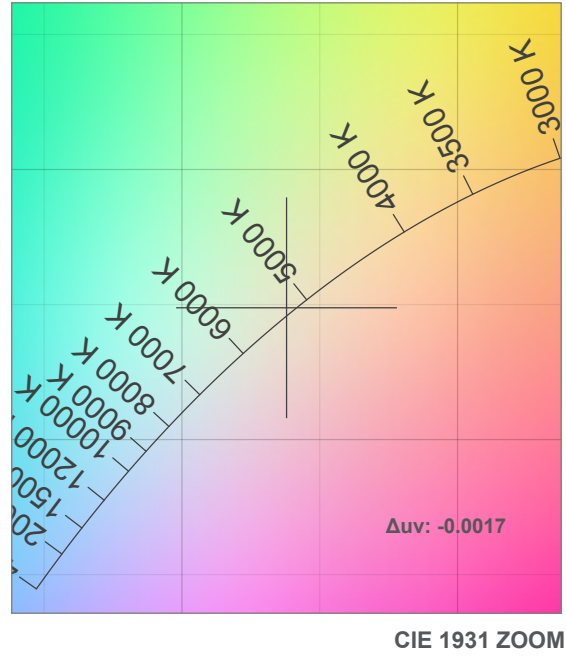
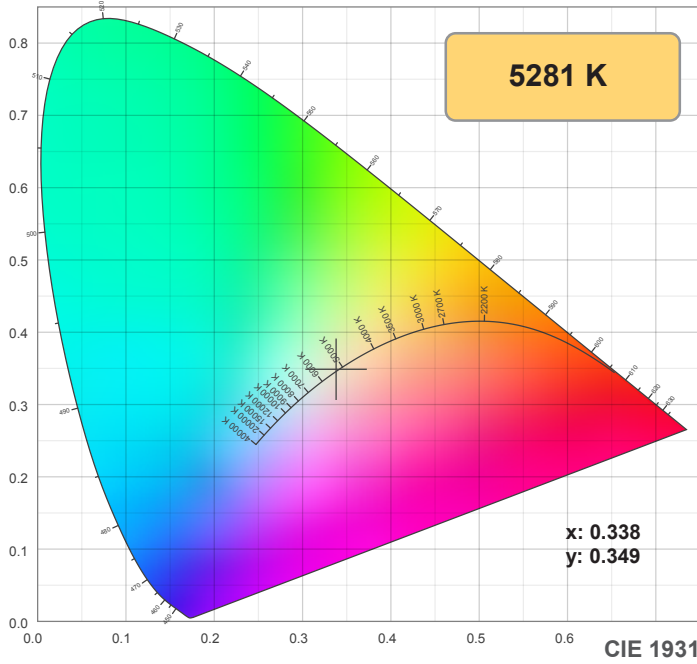
Intensities in 270° c-plane

0°	5°	10°	15°	20°	25°	30°	35°	40°	45°	50°	55°	60°	65°	70°	75°	80°	85°	90°	95°
73.1	72.7	71.8	70.4	68.6	66.2	63.2	59.8	56.0	51.8	47.3	42.5	37.2	31.7	25.9	19.9	14.0	8.4	3.9	1.0
100%	100%	98%	96%	94%	91%	87%	82%	77%	71%	65%	58%	51%	43%	35%	27%	19%	12%	5%	1%

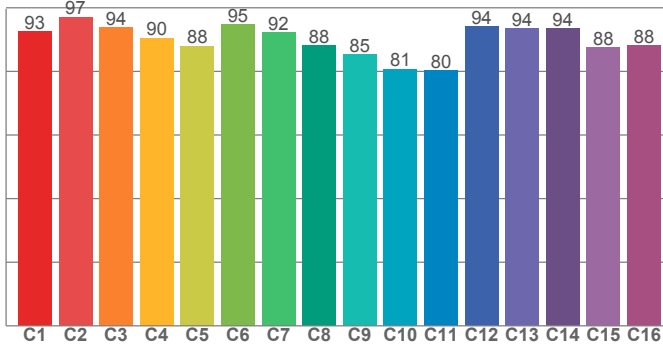
Beam angle 50%	Field angle 10%	Cutoff angle 2,5%	Intensity ratio in 120° cone	Intensity ratio in 90° cone
121.2°	170.5°	183.9°	72.6%	48.1%

Note: specifications are representative of the diode type and not a particular tape light article.

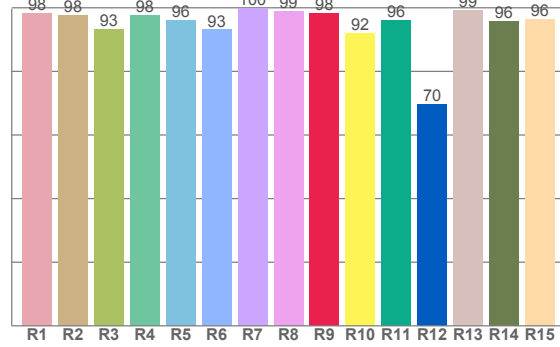
5000K



TM30: 89.7



CRI: 96.8 (R1-R8)



CRI R values, only R1-R8 are used to calculate final CRI value

R1	R2	R3	R4	R5	R6	R7	R8	R9	R10	R11	R12	R13	R14	R15
98.2	97.7	93.2	97.7	96.0	93.1	99.7	98.8	98.3	91.9	96.0	69.7	99.1	95.8	96.3

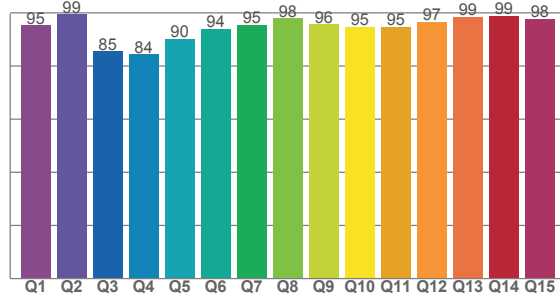
TM30 C values, 16 binned values out of total of 99 C values

C1	C2	C3	C4	C5	C6	C7	C8	C9	C10	C11	C12	C13	C14	C15	C16
92.6	97.1	93.9	90.5	88.0	94.9	92.2	88.2	85.4	80.7	80.4	94.2	93.6	93.6	87.6	88.1

CQS Q values

Q1	Q2	Q3	Q4	Q5	Q6	Q7	Q8	Q9	Q10	Q11	Q12	Q13	Q14	Q15
95.2	99.4	85.4	84.4	90.2	93.9	95.4	97.9	95.6	94.6	94.7	96.7	98.5	98.9	97.8

CQS: 93.0



Color parameters

Color temperature	Color rendering index	Red component	Color fidelity	Color gamut	Color quality scale	Color coordinate cie 1931	Color coordinate cie 1931	Color coordinate	Color coordinate	Color division from black body
CCT	CRI	CRI R9	TM30 Rf	TM30 Rg	CQS	x	y	u	v	Δuv
5281 K	96.8	98.3	89.7	99.2	93.0	0.338	0.349	0.208	0.321	-0.0017

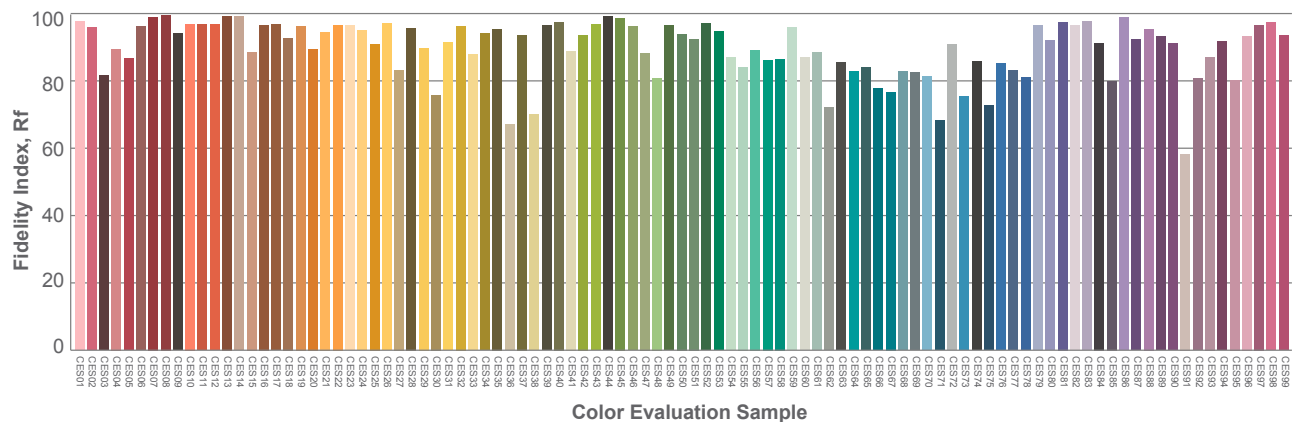
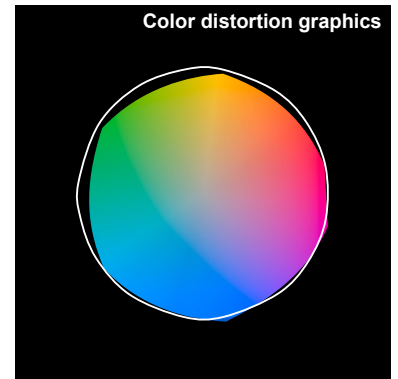
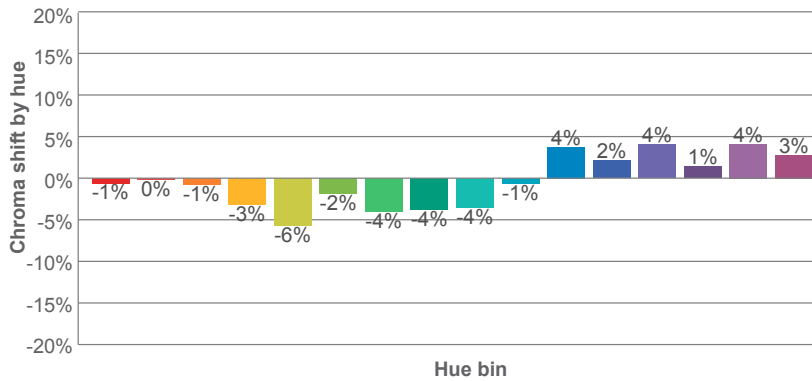
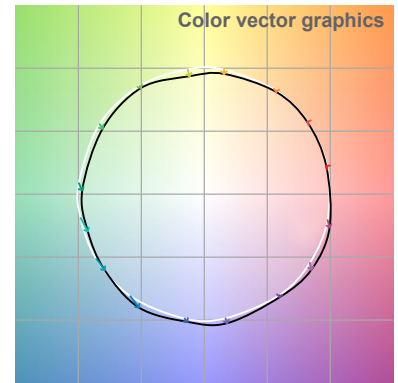
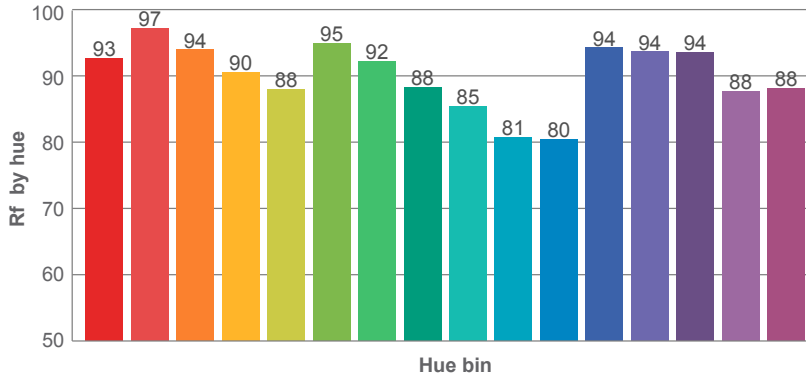
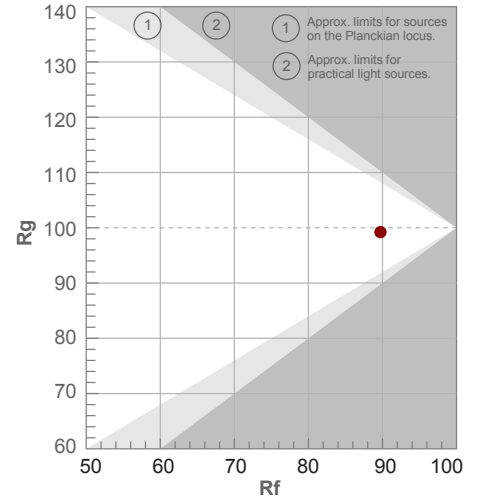
Note: specifications are representative of the diode type and not a particular tape light article.

5000K

Rf 89.7
Fidelity index Rf

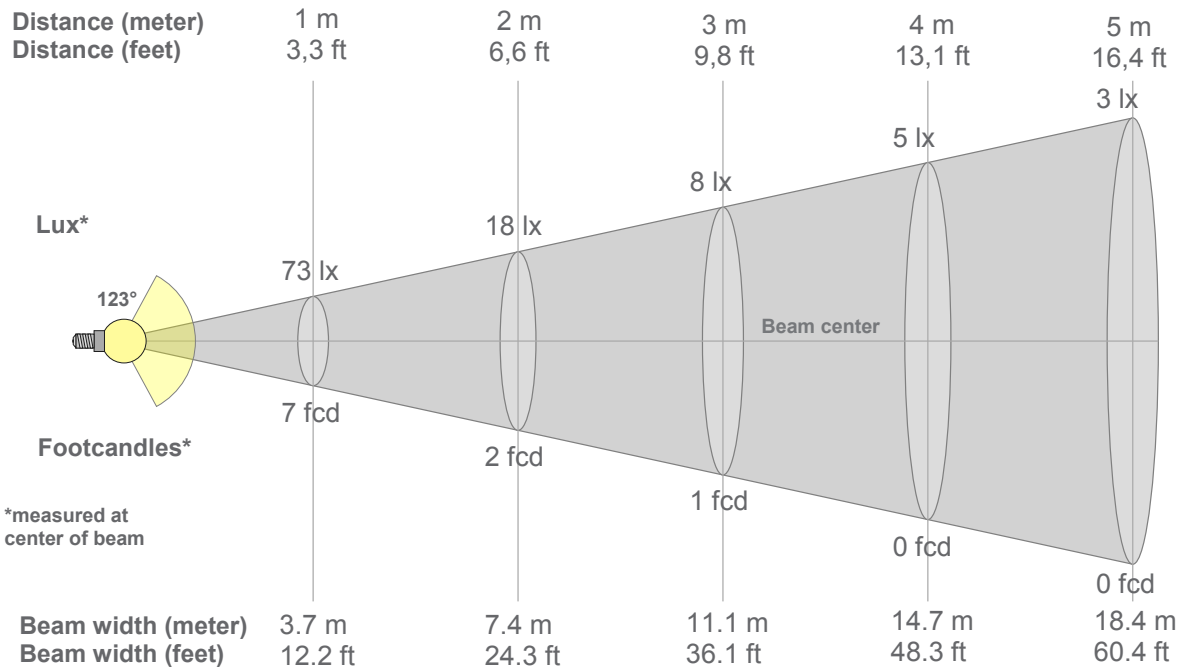
Rg 99.2
Gammut index Rg

Hue Bin	R _f	Graphic shifts (%)	
		Chroma	Hue
1	93	-1%	1%
2	97	0%	0%
3	94	-1%	0%
4	90	-3%	-1%
5	88	-6%	0%
6	95	-2%	0%
7	92	-4%	2%
8	88	-4%	5%
9	85	-4%	11%
10	81	-1%	11%
11	80	4%	11%
12	94	2%	3%
13	94	4%	1%
14	94	1%	-1%
15	88	4%	-4%
16	88	3%	-5%



Note: specifications are representative of the diode type and not a particular tape light article.

5000K



Beam intensities from 1-20m

1m	2m	3m	4m	5m	6m	7m	8m	9m	10m	11m	12m	13m	14m	15m	16m	17m	18m	19m	20m
3.3ft	6.6ft	9.8ft	13.1ft	16.4ft	19.7ft	23ft	26.2ft	29.5ft	32.8ft	36.1ft	39.4ft	42.7ft	45.9ft	49.2ft	52.5ft	55.8ft	59.1ft	62.3ft	65.6ft
73lx	18lx	8lx	5lx	3lx	2lx	1lx	1lx	1lx	1lx	1lx	1lx	0lx	0lx	0lx	0lx	0lx	0lx	0lx	0lx
6.8fcd	1.7fcd	0.8fcd	0.4fcd	0.3fcd	0.2fcd	0.1fcd	0.1fcd	0.1fcd	0.1fcd	0.1fcd	0fcd	0fcd	0fcd	0fcd	0fcd	0fcd	0fcd	0fcd	0fcd

Intensities in 0° c-plane

0°	5°	10°	15°	20°	25°	30°	35°	40°	45°	50°	55°	60°	65°	70°	75°	80°	85°	90°	95°
72.7	72.4	71.6	70.6	69.2	67.0	64.3	61.2	57.5	53.3	48.7	43.6	38.1	32.2	25.9	19.5	13.5	8.2	3.8	1.2
100%	100%	98%	97%	95%	92%	89%	84%	79%	73%	67%	60%	52%	44%	36%	27%	19%	11%	5%	2%

Intensities in 90° c-plane

0°	5°	10°	15°	20°	25°	30°	35°	40°	45°	50°	55°	60°	65°	70°	75°	80°	85°	90°	95°
72.7	72.4	71.6	70.6	69.2	67.0	64.3	61.2	57.5	53.3	48.7	43.6	38.1	32.2	25.9	19.5	13.5	8.2	3.8	1.2
100%	100%	98%	97%	95%	92%	89%	84%	79%	73%	67%	60%	52%	44%	36%	27%	19%	11%	5%	2%

Intensities in 180° c-plane

0°	5°	10°	15°	20°	25°	30°	35°	40°	45°	50°	55°	60°	65°	70°	75°	80°	85°	90°	95°
72.7	72.5	71.9	70.8	69.1	66.9	64.2	61.0	57.3	53.2	48.6	43.5	38.1	32.3	26.2	20.0	13.9	8.3	3.5	0.6
100%	100%	99%	97%	95%	92%	88%	84%	79%	73%	67%	60%	52%	44%	36%	28%	19%	11%	5%	1%

Intensities in 270° c-plane

0°	5°	10°	15°	20°	25°	30°	35°	40°	45°	50°	55°	60°	65°	70°	75°	80°	85°	90°	95°
72.7	72.5	71.9	70.8	69.1	66.9	64.2	61.0	57.3	53.2	48.6	43.5	38.1	32.3	26.2	20.0	13.9	8.3	3.5	0.6
100%	100%	99%	97%	95%	92%	88%	84%	79%	73%	67%	60%	52%	44%	36%	28%	19%	11%	5%	1%

Beam angle 50%	Field angle 10%	Cutoff angle 2,5%	Intensity ratio in 120° cone	Intensity ratio in 90° cone
123°	171.9°	185.5°	72.2%	47.8%